

## FITZROY BALL BEARING WITHDRAWAL UNITS

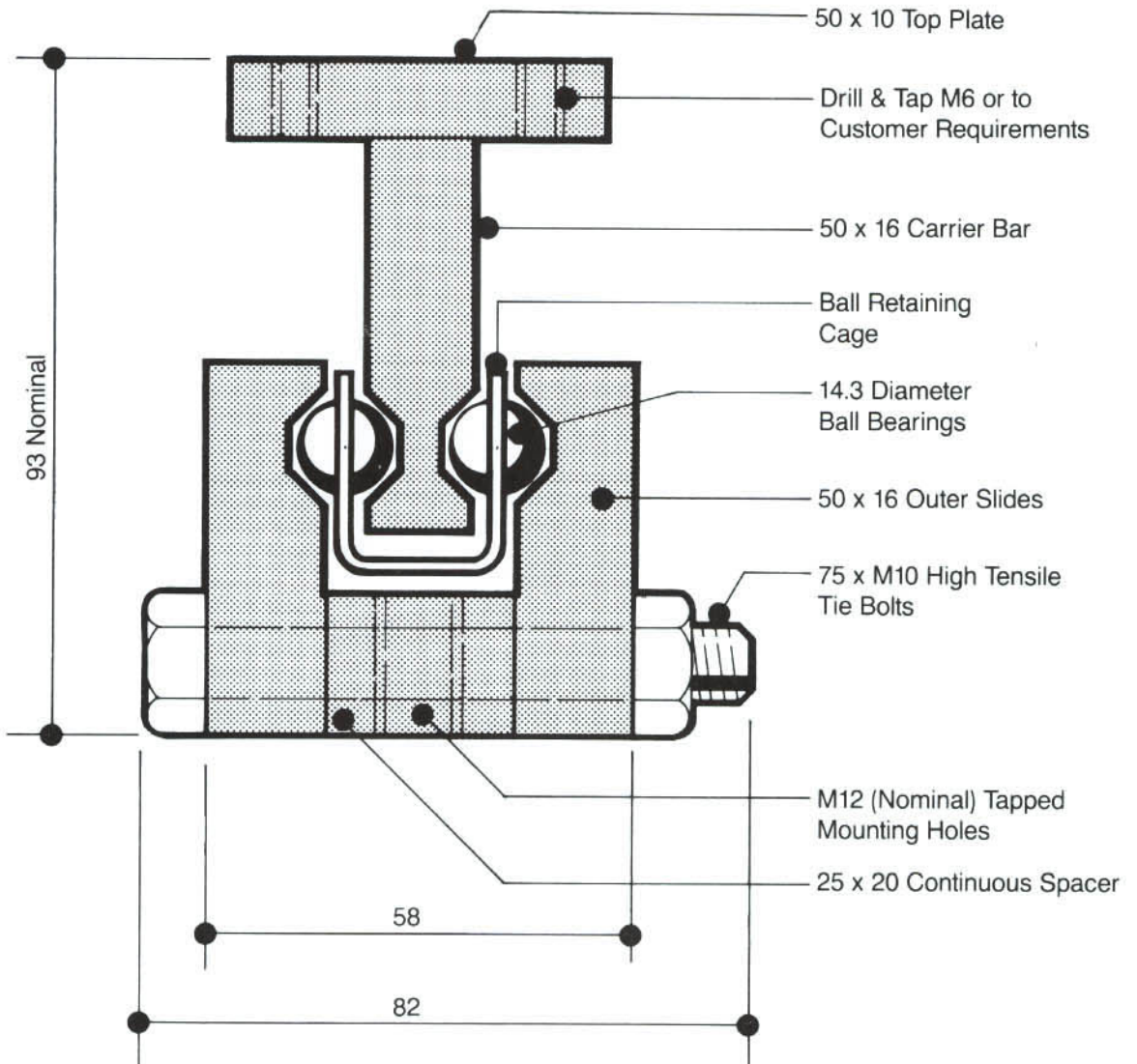
### STEEL HEAVY S1000W

Weight Capacity 1000 Kgs/pair

### TYPICAL SECTION STANDARD UNIT

SCALE: FULL SIZE

**IMPORTANT**  
 WEIGHT CAPACITY IS NOMINAL.  
 RECOMMENDED WORKING LOAD  
 CONTROLLED BY SLIDE LENGTH AND  
 TRAVEL, AND LOAD DISTRIBUTION.



### ELEVATION STANDARD WITHDRAWAL UNIT

NOT TO SCALE

Note: Slide Tracks must be Parallel and Level.  
 Any Misalignment will Jam Slide.

